

INTER CLUB SERIES - 2015

SAILING INSTRUCTIONS

1. RULES

The regatta will be governed by the Racing Rules of Sailing (RRS), 2013-2016, the rules of the participating Classes, and by these Sailing Instructions. If there is conflict, these Sailing Instructions prevail.

Boats shall not impede the passage of ship traffic that can safely navigate only within a narrow channel or fairway, (see U.S. Department of Commerce chart 18649 for designated narrow channels and fairways of SF Bay) or fishing or other vessels with restricted ability to maneuver. Boats identified by sail number who endanger their own safety or that of the commercial or government vessel will be subject to protest by the Race Committee or contestant and face possible disqualification. A protest for allegations of the above will be heard by a protest committee whether or not the requirements of or RRS 61.1 (a) and (b) have been fulfilled or exclusions referenced in RRS 60.2(a) have been met. A disqualification for a safety violation of this section shall be considered as a disqualification not excludable (DNE).

Boats must comply with the United States Coast Guard's requirements for recreational vessels, RRS 1.2 and minimum additional equipment prescribed by her Association.

All competitors are required to wear life jackets or other adequate personal buoyancy while racing. This changes RRS 40.

2. COMMUNICATION WITH COMPETITORS

Notices to competitors will be posted on the JIbeset website before 12 Midnight on the day before the race.

All yachts must sail within hail of the Race Committee Boat to check in before the first warning sound.

The Race Committee may broadcast race information on VHF channel listed in Section 3.

3. RACE DATES, RACE LOCATION, VHF CHANNEL

Race	Date	First Signal	Race Committee	Course	VHF
1	04/11/15	12:25:00	Coyote Point Yacht Club	South Bay	72
2	05/09/15	12:25:00	Encinal Yacht Club	South Bay	71
3	06/13/15	11:25:00	Oakland Yacht Club	South Bay (Long Course)	78
4	07/11/15	12:25:00	South Beach Yacht Club	South Bay	79
5	08/08/15	12:25:00	BAMA	South Bay	71
6	09/12/15	12:25:00	Island Yacht Club	South Bay	72

Note: Race 3 will be run as a Pursuit Race. Starting times will be posted on 6/13/15

4. COURSES

The courses and marks are described on the attached **Course Sheet**.

5. THE START

It is the Race Committee's intention is start Divisions as set out in the **Starting Order Sheet** with Divisions starting at 5 minute intervals. The Race Committee reserves the right to change the starting order and starting interval at their discretion.

6. RECALLS

When an Individual Recall has been signaled the Race Committee may hail the sail number(s) of the boat(s) identified on the course side of the starting line after the start signal by loud hailer and/or VHF channel shown in Section 3 for the race.

When a general recall has been signaled, the start(s) for any succeeding division(s) will be postponed accordingly.

7. RESTRICTED AREA

The restricted areas for this Regatta are listed on Page 8. All restricted areas are designated as obstructions.

A yacht found to have violated a restricted area shall receive a 20% penalty calculated as set out in RRS 44.3(c).

8. TIME LIMIT

No warning signals will be made after 1500 hours. Boats finishing after 17:30 will be scored "DNF."

9. PROTESTS

Protests should be mailed to the Inter-Club RC, c/o Oakland Yacht Club, 1101 Pacific Marina, Alameda 94501-1157 with a post mark no later than the Monday following the Race. At the Host Club's option, a preliminary non-binding arbitration may be ordered before the protest hearing.

10. RETIRING FROM A RACE

Competitors retiring before finishing from a race shall notify the Race Committee as soon as possible in person or by VHF shown in Section 3. Competitors failing to do so will be scored "DSQ" by the Race Committee. This changes RRS A5, RRS 61, RRS 63, and RRS 64.

11. SCORING

The scoring systems is time on distance using the course length shown in the Course Sheet.

The low point scoring system, RRS Appendix A, will apply with the following changes:

Boats scored "DNS," "OCS," "DNF," or "RAF" shall be scored the number of starters in the race plus 1 point, scored "DSQ" shall be scored the number of starters in the race plus 2 points, scored "DNC" shall be scored the number of starters in the race plus 2 points

A "DSQ" for a safety violation as outlined in Section 1, Rules, shall be considered as a disqualification not excludable (DNE.)

This regatta consists of 6 races. At least one boat in a division must finish before the time limit for a race to be scored. When fewer than five race have been scored, a yacht's series score will be the total of her race scores. When five or more races have been scored, a yacht's score will be the total of her race scores excluding her worst excludable score.

The following applies only to F18 and Weta

1. These boats may only start in an Inter Club Race when there is a chase boats in attendance to the satisfaction of the Race Committee responsible for the race
2. These boats may only start in an Inter Club Race when they carry a VHF radio, The Race Committee may carry out spot checks by call boat on the channel assigned for the race. Boats that do not respond will be scored a DSQ for that race and may not race in any of the remaining races in the series.

Mark #	Description
1	Treasure Island
2	Alcatraz Island
3	Temporary Orange or Yellow Buoy approx. 0.5 nm north of the Bay Bridge span H-I
6	Yellow Sphere, "M", 200 yds. North of Ft. Mason Docks
7	Red Channel Buoy "2", FI R 6s, 1.2 nm east of Alcatraz
8	Red Channel Buoy "4", FI R 4s, 1.0 nm east of Point Blunt
9	Temporary yacht club buoy 0.5 nm South of the Berkeley Pier
12	G "1" FI G4s, Little Harding Rock
15	Yellow Sphere "Y" - 0.5 nm east of Yellow Bluff
16	Blackaller Buoy - Yellow Sphere "C", 0.2 nm East of Ft. Point
17	Harding Rock Buoy - RG, "HR", FI (2+1) R 6s
18	Blossom Rock Buoy - GR, "BR", FI (2+1) G 6s, Bell
24	East Quarry Point - R, "6", FI R 4s, Bell
32	Removed by USCG
33	Red Buoy "4", FI R 4s, Oakland Inner Harbor Entrance Channel
34	Red Buoy "2", FI R 2s, 0.5 nm east of Potrero Point
35	Green Day Mark "3", FI G 2.5s, Alameda NAS Entrance Channel
36	Red Day Mark "4", FI R 4s, Alameda NAS Entrance Channel
37	Lash Terminal Lighted Buoy 5 (G FL 4.0S) - approx 1.0nm SSE of Army St. Terminal
2NAS	Not used in 2015
1NAS	Green Buoy "1", FI G 4s, Alameda NAS Entrance Channel
AS	Yellow sphere, approx 0.25 nm East of BVBC
G	Yellow Can "G" or Temporary Orange Triangle YC Buoy on Olympic Circle
FC	Temporary club buoy, approx. 0.25 nm north of the entrance to Clipper Cove (near TI)
OAK	Temporary yacht club buoy off Oakland Yacht Club
SC	Red/Green Buoy "SC", FI G (2+1), 1.0 nm ENE of Mission Rock Terminal
SH	Southampton Shoal Day Mark - ISO R 6s, 32ft., 6M, Bell
BB1	Temporary Mark (red / orange tetrahedron marked with "BB") 1.13NM SE of Ballena Bay {Approx. 37 45N 122 18W}

Start Lines:

9	Central Bay: Between a temporary yacht club buoy 0.5 nm South of the Berkeley Pier and an orange flag on the Committee Boat. The committee boat will then move to the finish location, see FC below.
1NAS	South Bay: Between 1NAS at the Alameda Naval Air Station Channel entrance and an orange flag on the Committee Boat.

Finish Lines:

FC	Central Bay: a temporary yacht club buoy - "FC" located approximately 0.25 nm North of the entrance to Clipper Cove on Treasure Island and an orange flag on the Committee Boat.
1NAS	South Bay: All courses will have the same start and finish line - between Mark 1NAS and an orange flag on the Committee Boat..
OYC	The Finish Line will be between an orange flag on the dock in front of Oakland Yacht Club and a temporary mark in the Estuary.

COURSE SHEET

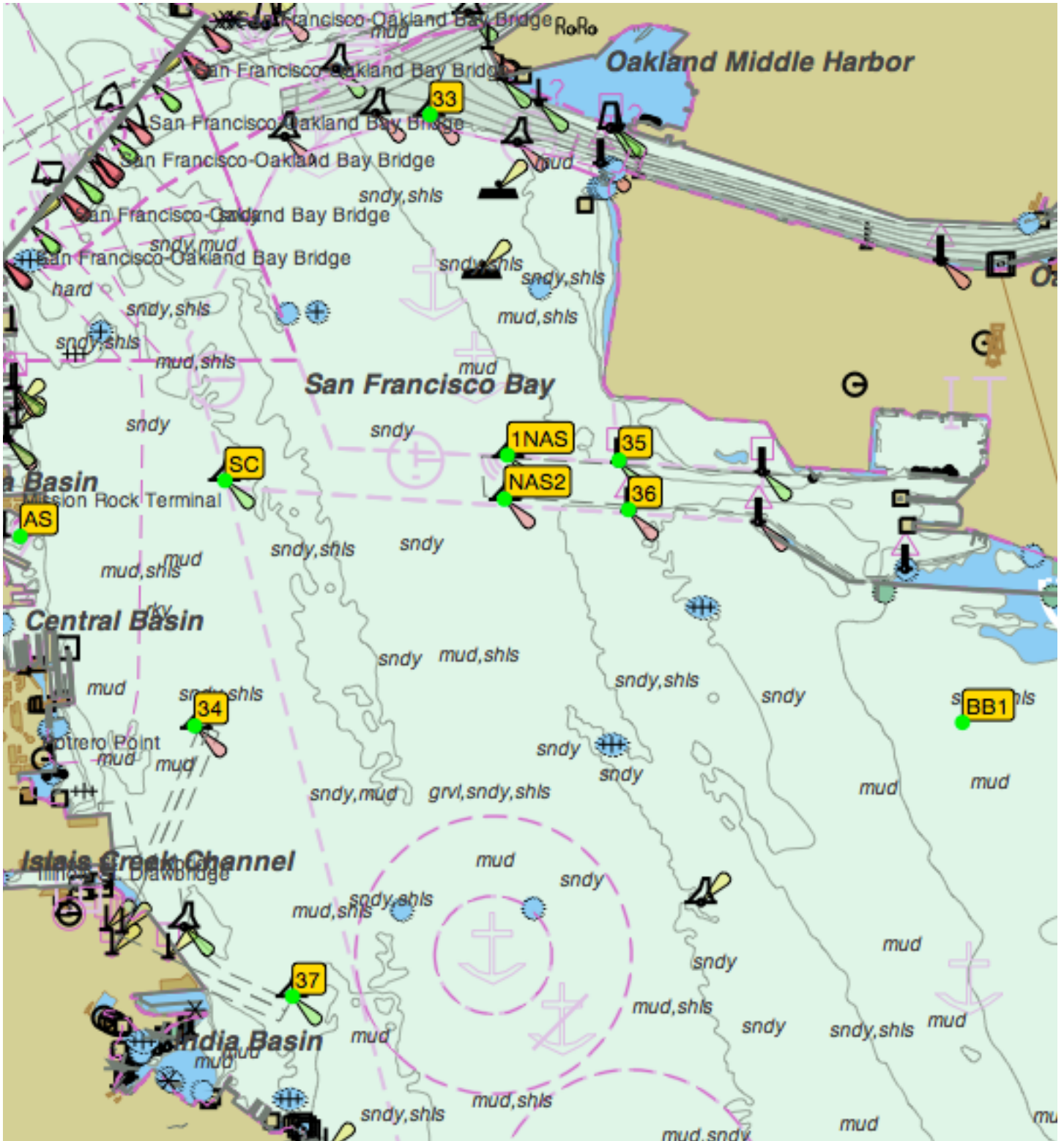
South Bay - Long Course

Course #	Start							Finish	Distance
1	1NAS	AS-P	BB1-S	37-S	SC-S	33-S		0YC	17.29

South Bay

Course #	Start								Finish	Distance
1	1NAS	BB1-P	33-P	34-S	SC-S	33-S	35-S		1NAS	13.99
2	1NAS	33-S	36-S	33-S	BB1-S	36-P			1NAS	11:53
3	1NAS	33-S	BB1-S	36-P					1NAS	7.83
4	1NAS	SC-P	34-P	36-P	AS-P	35-P	SC-P	36-P	1NAS	13.25
5	1NAS	SC-P	34-P	35-P	AS-P	34-P	36-P		1NAS	10.52
6	1NAS	34-P	BB1-P	SC-S	33-S	35-S			1NAS	12.37
7	1NAS	34-P	BB1-P	35-P					1NAS	7.67
8	1NAS	SC-P	BB1-S	34-S	35-P	SC-P	36-P		1NAS	13.96
9	1NAS	SC-P	36-P	AS-P	36-P	SC-P	36-P	35-P	1NAS	12.06
10	1NAS	SC-P	36-P	35-P	AS-P	36-P	35-P		1NAS	8.86
11										Intentional left blank
12	1NAS	SC-P	36-P	SC-P	36-P				1NAS	6.84

SOUTH BAY MARKS



RESTRICTED AREAS

Between the vertical "H" beam 20 yards west of the St. Francis Yacht Club and the shore to its south

Between Anita Rock limiting buoy and the shore to its south

Between Alcatraz Island and Alcatraz bell buoy

Between Angel Island (Point Blunt) and North Channel Buoy 3 (G FL1sec)

Between the most eastern shore of Yerba Buena Island and Pier I (India) of the existing Bay Bridge and Pier E of the new Bay Bridge - see page 8.

After completing the first leg of the course the start / finish line is restricted. A yacht shall not cross the start / finish line unless she is finishing the course.

